



INDIANA UNIVERSITY BLOOMINGTON

## STUDENT LIFE

ASSOCIATE VICE PROVOST FOR STUDENT LIFE,  
INVOLVEMENT AND BELONGING



Paso A Paso



# About IU

Founded in 1820 and serving over 47,000 students, Indiana University Bloomington is the flagship campus of IU's seven campuses and two regional centers. Innovation, creativity, and academic freedom are hallmarks of our world-class contributions in research and the arts. We have nurtured leaders over two centuries. IU educational experiences change the lives of our graduates and the communities they serve as experts and professionals.

Indiana University is committed to ensuring students are the center of our universe at IU; expanding excellence across the university in research, discovery, and creativity; and playing a leadership role in advancing the quality of life for the residents of Indiana and beyond. Psychology, foreign languages, and higher education and student affairs – our diverse academic programs are among the best.

The top-ranked IU Jacobs School of Music and our fine arts, theatre, and entertainment offerings rival much larger cities. The School of Public and Environmental Affairs has a number of academic programs ranked first in the country, and the Kelley School of Business is consistently ranked in the top five for undergraduate business programs. Similarly, the School of Education, School of Informatics, Computing, and Engineering, and the College of Arts and Sciences all boast highly ranked programs.







## Beyond IU

Beyond academic rankings, IU and Bloomington rack up accolades like #1 Nonprofit Management Graduate Program (U.S. News & World Report), #1 Environmental Policy And Management Graduate Program (U.S. News & World Report), #1 Public Affairs Graduate Program (U.S. News & World Report), #1 Online M.B.A. Program (U.S. News & World Report), #2 Best College Campus In Indiana (Niche), and #2 Social Psychology Graduate Program (U.S. News & World Report). IU consistently ranks among the most beautiful campuses in the country and benefits from being just 50 miles away from Indianapolis, allowing enjoyment of the museums, music, shopping, or whatever you might want from a major city. As a member of the Big 10 conference, the Indiana Hoosier athletic teams provide entertainment and school spirit throughout the school year. The campus, and the whole state of Indiana, is known for its passion for championship basketball.

Bloomington itself is known for its culture and year-round activities. The downtown district of galleries, music venues, restaurants and more offer a wide variety of entertainment. Bloomington is listed as one of the Top 100 Best Places to Live in America on Livability.com. Bloomington lies adjacent to Lake Monroe, a more than 10,000 acre lake that is the largest in the state, and Hoosier National Forest is less than an hour's drive away. Bloomington has been named a Tree City USA for the last 30 years and counting.



# The Students

During the 2022-2023 academic year, enrollment totaled 47,005, composed of 35,660 undergraduates and 11,345 graduate and professional students. Diversity is a priority for IU. Students come from all 92 Indiana counties, all 50 U.S. states and 121 countries of citizenship. IU Bloomington's students also bring to campus diverse cultural backgrounds with domestic students of color making up 28 percent of the student body, a record share of the population. International student enrollment also increased to 5,437 students.

In addition to diverse geographic backgrounds, 73 percent of incoming students received gift aid, including scholarships and grants, which is an increase from the previous fall. The incoming class of beginning students also includes 1,523 students receiving federal Pell Grants, which are awarded to undergraduate students demonstrating exceptional financial need.

Student life is varied and active, with 750+ student organizations and 20+ thematic communities and Living-Learning Centers. More than 60 fraternities and sororities add to campus life, composing about 23 percent of the student body.







## Provost Rahul Shrivastav

In February 2022, Rahul Shrivastav assumed the role of Executive Vice President and Provost of IU Bloomington. As provost, he serves as the Chief Academic Officer for the IU Bloomington campus community of 45,000+ students, 2,400+ faculty, and 5,700+ staff. He provides academic leadership and support for faculty and student initiatives that enhance education, research, and creative activity. In addition to his executive leadership role, he also has a faculty appointment in the Department of Speech, Language and Hearing Sciences in the College of Arts and Sciences.



Shrivastav received his doctoral degree in Speech and Hearing Sciences with a minor in Cognitive Sciences from Indiana University. His undergraduate and graduate training are in Speech and Hearing Sciences from the University of Mysore, India. Before coming to IU, Shrivastav served as the Vice President for Instruction at the University of Georgia. Prior to that, he served as Professor and Chair of the Department of Communicative Sciences and Disorders and directed the Voice and Speech Laboratory at Michigan State University. The National Academy of Inventors elected him as a fellow in 2020.



# IUB 2030 Strategic Plan

The IU 2030 Strategic Plan establishes three foundational pillars to guide the many contributions of faculty and staff across IU:



**STUDENT SUCCESS  
AND OPPORTUNITY**



**TRANSFORMATIVE  
RESEARCH AND CREATIVITY**



**SERVICE TO STATE  
AND BEYOND**

IUB will ensure the long-term success of all students — undergraduates, graduates, professional students, online, and lifelong learners — by providing the highest quality of education through a rich, diverse, and engaging environment.



## GOAL 1

### **Undergraduate Academic Experience and Career Preparation:**

IUB will provide an exceptional academic experience for all undergraduate students and uniquely prepare them for the careers of the future.



## GOAL 2

### **Graduate Student Academic Experience and Career Preparation:**

IUB will ensure graduate and professional students are prepared for diverse career opportunities through excellent and innovative degree programs.



## GOAL 3

### **Inclusion, Wellness, and Student Support:**

IUB will foster a diverse and inclusive student community that stimulates a strong sense of belonging and well-being.







# Office of Student Life

With the launch of the IU Bloomington 2030 Strategic Plan, the creation of a new Office of Student Life is taking shape this summer. The Office will focus on supporting students' academic and co-curricular efforts while also contributing to their experiences and successes.

The Office of Student Life will combine the 22 departments of the former Division of Student Affairs with Residence Life and IU Corps.

## Three key focus areas:

- Care and Advocacy
- Health and Wellbeing
- Involvement and Belonging

## Departments Include:

- Accessible Educational Services
- Bias Incident Response
- Bradford Woods
- Center for Veteran and Military Students
- Collegiate Recovery Community
- Counseling and Psychological Services
- Crimson Cupboard
- Dean of Students Office
- Family Engagement
- Health and Wellness
- Indiana Memorial Union (IMU)
- IU Corps
- IU Outdoor Adventures
- Office of Sorority and Fraternity Life
- Office of Student Conduct
- Recreational Sports
- Residence Life
- Sexual Violence Prevention and Victim Advocacy
- Student Advocates Office
- Student Care and Resource Center
- Student Health Center
- Student Involvement and Leadership Center
- Student Legal Services
- Substance Use Intervention Services



# Student Life Leadership

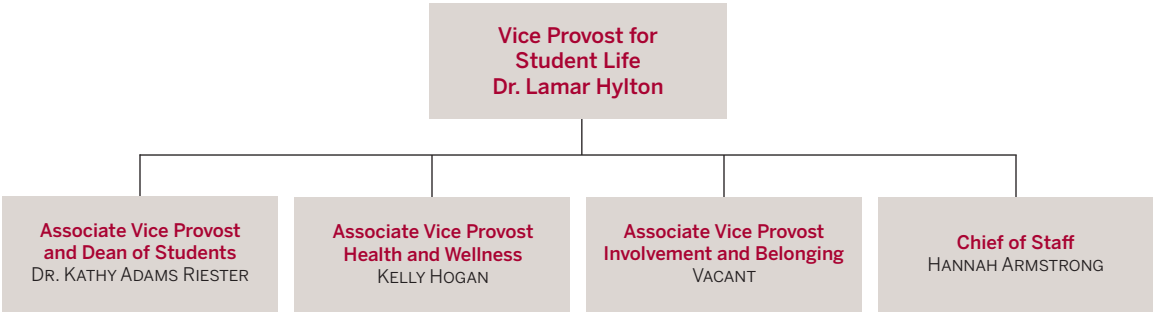
In September 2023, Dr. Lamar Hylton will join Indiana University Bloomington as the Vice Provost for Student Life. With 16 years of experience coordinating and leading teams across student life, Hylton will help shape IUB 2030 strategic goals to champion a healthy campus environment and leads the development of a transformational student co-curricular experience that enhances the academic mission of the university.



Hylton earned a Master of Education in college student personnel from Ohio University in Athens, Ohio, and a Ph.D. in higher education administration from Morgan State University in Baltimore, Maryland. After earning his master’s degree in 2007, Hylton began leading student-facing teams at Goucher College in Baltimore, Maryland. He has also cultivated student success at University of North Carolina Asheville, University of Minnesota Twin Cities, and Kent State University. A nationally recognized leader in student affairs, Hylton is engaged with multiple professional associations, including the ACPA, APLU, and NASPA, aimed at shaping the future of higher education.

# Student Life Leadership

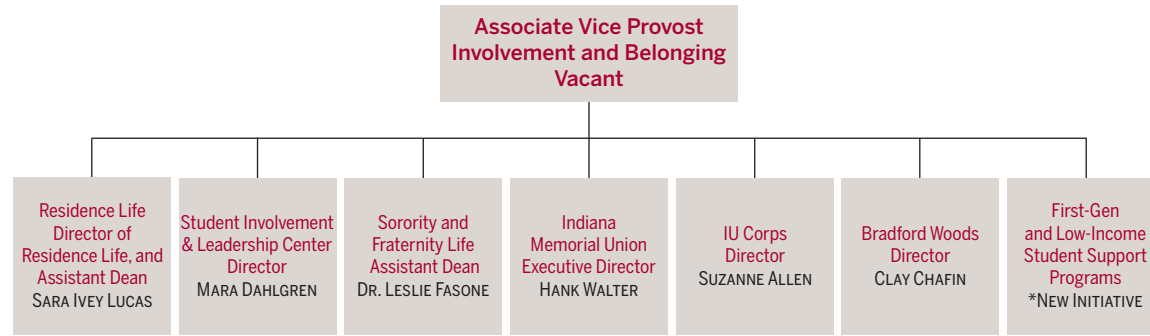
The Associate Vice Provost for Student Life, Involvement and Belonging, will report to the Vice Provost for Student Live and be a member of the Division’s senior leadership team.





# Student Involvement and Belonging Organizational Chart

The new Vice Provost for Student Life will help to review the specific areas within each of these three key areas to determine alignment and may make adjustments.



# Associate Vice Provost, Involvement and Belonging

The Office of Student Life is seeking candidates with proven innovative and transformative leadership. The Associate Vice Provost will:

- Lead implementation of the IUB 2030 strategic plan goals:
  - Support an environment where students learn outside the classroom which prepares them for success inside the classroom and in life after graduation.
  - Collaborate on new model for inclusion and belonging services to balance the need to create a deeper sense of shared community while also providing supportive spaces for individual needs.
  - Support efforts to increase and continually assess the quality of student engagement in campus life and co-curricular learning by leveraging IU's assets.
- Support the connection to academic units and partners to support linking academic and co-curricular experiences
- Address identified equity gaps and focus on diversity, equity, and inclusion to support belonging
- Grow community involvement through student volunteerism
- Support a stronger sense of a shared IU identity and affinity
- Assist in implementing and evaluating programs, services, and activities related to the co-curricular experience, including: student engagement and success, leadership development, and student inclusion and belonging.
- Support the evolution of residential living to align with the newly re-imagined first year experience.
- Drive innovation, engagement, assessment, and excellence within involvement and belonging initiatives.
- Collaborate with multiple internal and external departments across a large diverse campus.
- Foster an inclusive and welcoming environment for students and staff.
- Establish, enforce, and follow processes, policies, and controls to ensure a safe environment.
- Engage in campus, regional, and national professional discussions related to best practices.
- Provide supervision, evaluation, and training for all involvement and belonging focused staff.





## Bradford Woods

### **Bradford Woods**

Bradford Woods is Indiana University's Outdoor Center providing inclusive experiential and therapeutic outdoor programs on a 2,500-acre campus, located between Bloomington and Indianapolis.

## Student Support Programs

### **First-Gen and Low-Income**

Although there are many resources at IUB to support first-gen and low-income students, the Office of Student Life will create a new office dedicated to enhancing these students experience at IU. Resources will be allocated to support the creation of a team to connect first-gen and low-income students to communities and resources across campus to make their transition and graduation from IU successful.



# Indiana Memorial Union

The Indiana Memorial Union (affectionately known to the IU community as the IMU) opened in 1932 with funds raised as a memorial to Hoosiers who had fallen during World War I. The goal at the time was for the IMU to be space for students on campus and was designed with dining, lounging space, billiards, and space for events, meetings, and programs. Since then, the building has been expanded twice and is known as one of the most iconic student unions in the country. The building's rich history is visible in some of its most popular spaces.

Today, the Indiana Memorial Union still serves as the heart of the campus community by:

- Welcoming more visitors to campus than any other building and aims to demonstrate a vibrant, interesting campus community.
- Building connections between students through active involvement in programs and activities, facilities that bring students together, and shared experiences.
- Building connections to Indiana University and a sense of belonging, which improves retention and the campus experience for students.







## IU CORPS



A network connecting all students to meaningful volunteer-focused experiences, events, internships, courses, and research opportunities. IU Corps aligns with one of Indiana University's core missions:

to create dynamic partnerships with the state and local communities in economic, social, and cultural development and to offer leadership in creative solutions for 21st-century problems.



“As an associate instructor and city commissioner, I’m always aware that there’s untapped connections between the university and the larger community of Bloomington. Working with a small team of driven undergrads, I was not prepared for the level of excellence the team delivered with little project oversight and open collaboration as needed.

The START program allowed me to deliver the dedicated work of the students to the City Council, demonstrating that undergraduate learning can lead to immediate results that efficiently and effectively support our community in creating a better, stronger future.”

– **Jason Michalek**  
(Community Advisory on Public Safety (CAPS) Commission)



# Residence Life

Residence Life houses approximately 12,000 predominately first year students in 15 traditional residence halls across 3 neighborhoods on IU Bloomington's campus. In addition to our traditional floors, we have 21 learning communities, including 10 Living Learning Centers that partner with academic units. Our residence halls are complimented by 4 unfurnished apartment buildings which provided expanded, campus-facilitated affordable housing options to approximately 1,200 IUB graduate and undergraduate students.

In addition to our physical spaces, Residence Life supports holistic student development through our residential curriculum, which educates, empowers, and engages residents to support social growth while enabling overall wellness. These programs are complimented by 10 residence hall libraries, 35 classroom spaces, 3 collaborative Academic Support Centers, and 2 Hoosier Dens for alternative evening and late night programs.

Residence Life is professionally and personally committed to celebrating the rich diversity of people who live in, work in, or visit our residence halls and apartment housing communities. Our communities are rich, alive, dynamic, and inclusive environments designed to enable all individuals to stretch and grow to their full potential. We believe that our living environment must foster freedom of thought and opinion in the spirit of mutual respect.







## Office of Sorority and Fraternity Life

Indiana University Bloomington has one of the largest sorority and fraternity communities in the country. The mission of the Office of Sorority and Fraternity Life is to provide healthy, safe, inclusive, and supportive experiences for sorority and fraternity members through programming, advising, and support focused on our Standards of Excellence and Core Outcomes. We work to promote growth and excellence in the following areas:

- Academic Excellence
- Diversity and Inclusion
- Health and Safety
- Personal, Leadership, and Organizational Development
- Ritual & Values
- Service and Philanthropy
- Standards and Accountability

**8,622\***  
**MEMBERS**



**25%** of undergraduate student population

\*Includes estimated Spring 2022 enrollment.



**69+**  
sororities and fraternities



**39**  
housed chapters



**4**  
councils  
*Interfraternity Council (IFC)  
Multicultural Greek Council (MGC)  
National Pan-Hellenic Council (NPHC)  
Panhellenic Association (PHA)*



**500+**  
campus partners and alumni advisors



# Student Involvement and Leadership Center

The Student Involvement and Leadership Center fosters growth and learning among all students by designing and supporting inclusive experiences and engaging opportunities including:

- Advising the over 700 student organizations, including IU Student Government, on campus to help Hoosiers find their sense of belonging.
- Hosting programs and events to engage students, including Late Nite, the Student Involvement Fair, Block Party concerts, weekly film screenings, and more.
- Providing funding for student organizations through Funding Board.
- Supporting student leadership development programs, including LeaderShape and social justice trainings.



# Characteristics of the Successful Candidate

## Successful Candidates will have:

- A masters or terminal degree in higher education, student affairs, involvement, or a related field. Terminal degree preferred.
- Ten years of progressive student affairs experience at the director level or higher in student engagement, involvement, and sense of belonging as well as program implementation, staff development, fiscal management, and daily operations are required; a terminal degree is preferred.
- Commitment to being a strong student advocate.
- Significant knowledge and experience managing residential living communities.
- Demonstrated commitment to expand knowledge and awareness of diversity, equity, and inclusion, as evidenced through demonstrated self-awareness, understanding and valuing of others, and community building.
- Philosophically and ethically grounded, but not bound by conventional wisdom. Exhibits an understanding that the best practice is one that is most relevant to IU students at this moment in time – a reality that is ever-changing.
- Ability to work within a complex and diverse environment is necessary.





# IU Benefits Overview

Indiana University is committed to providing benefits that help protect employees' health and welfare, strengthen their financial well-being, and provide paid time off (PTO). The IU benefits package is often lauded as one of the best parts of working on our campus.

## Medical Coverage

Coverage starts on date of hire if enrollment occurs within 30 days of hire. IU contributes a significant amount to the employee's premium. The amount remaining is made by employee contributions on a pre-tax basis.

- Coverage is available at four levels: employee, employee with child(ren), employee with spouse, and family.
- Each plan offers comprehensive treatments, primary and specialist care, prescription drugs, mental health, wellness, and vision care.
- Two of the plans include a Health Savings Account (HSA) into which contributions are made tax free.

## Retirement Plans

- Enrollment in the Base Retirement Plan is automatic for eligible employees. IU contributes 10% of the participant's base salary. Staff are subject to a three-year cliff vesting.
- Employees are defaulted to the IU Tax Deferred Account at a 5% contribution rate unless they opt out during enrollment. Employees can choose to contribute 1 to 100% of their compensation as allowable by law.
- Employees can also opt to allocate funds into a 457(b) Retirement Plan.

## Paid Time Off for Professional Staff

- Full-time Professional Staff annually earn:
  - 10 paid holidays
  - 30 days of paid time off / 36 days after five years of service

## Other Benefits

- Life and Disability Insurance programs.
- Tuition benefit package for employees, spouses, and dependents.







INDIANA UNIVERSITY BLOOMINGTON

**STUDENT LIFE**

[studentaffairs.indiana.edu](http://studentaffairs.indiana.edu)